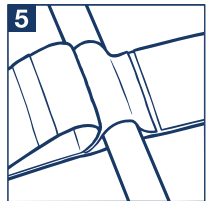
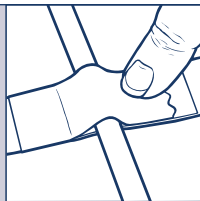
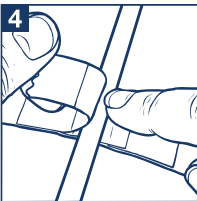
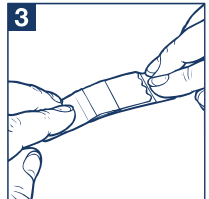
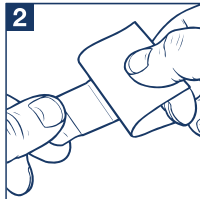




- CliniFix is a universal tube and catheter securement device
- Catheter/tubing can be repositioned repeatedly within the product wear-time

INSTRUCTIONS FOR USE

1. Skin should be clean and dry prior to application (do not use liquid soap or other soaps with added moisturiser or lanolin). Ensure there is no moisturiser or cream present on the prepared skin surface.
2. Remove paper backing.
3. Place CliniFix on the prepared skin surface. Smooth into place for 10-20 seconds to seal the hydrocolloid to the skin surface.
4. Release the hook and loop system tab and place the tubing in a comfortable position, re-secure the hook and loop tab - for best result do not stretch.
5. Alternatively, to secure the tubing/catheter rigidly to allow no movement, follow steps 1-4 and peel back the CliniFix inner film (indicated by blue arrows), Place the tubing in a comfortable position on the adhesive and re-secure the hook and loop tab - for best result do not stretch.



REMOVAL

1. CliniFix can be left in situ for up to seven days.
2. Once CliniFix has reached its full user wear time, it should peel off easily.
3. If CliniFix is to be worn for a short period or on sensitive areas of skin, removal can be assisted by warm water or a medical adhesive remover.
4. Prolonged contact with water may reduce the wear time i.e. bath/shower. Ensure the area is dry and smooth the device back into place (following step 3).

Indications for use

CliniFix is a securement or fixation device for use with catheters and tubes (including gastrostomy tubes, chest drains, central venous lines, wound drains, nephrostomy tubes, intravenous lines, urine drainage bags for use with sheaths, Foley catheters and suprapubic catheters).

Contraindications

CliniFix is not intended to be adhered to broken skin.

Storage and shelf life

Store away from direct sunlight at ambient temperature, between 10°C and 27°C. Keep dry. For shelf life, refer to the expiry date on each blister pouch.

Caution

Use only as directed. For external use only. Blister pouches are individually packaged for single use only. Reuse of this product may affect the performance and create additional risks to the user. Adhesion to dry or hairy areas of skin may be more difficult. When used with urethral sheaths, incorrect securement may cause device to dislodge and cause contamination and damage to the surrounding skin. Dispose of safely after use in line with local guidelines.

Warning

Keep out of reach of children. Discontinue if irritation occurs and report to the manufacturer quoting the LOT number. Should redness or other signs of irritation appear, or irritation persists, consult a medical professional. If ingestion occurs, seek immediate medical attention. Do not use if the packaging is damaged. Dispose of the damaged product and take a new one from the box.

	Manufacturer		Keep away from Sunlight
	EC Representative		Keep Dry
	Catalogue Number		Temperature Limit
	Batch Code		Do Not Re-use
	Medical Device		Do not use if packaging is damaged and consult instructions for use
	Unique Device Identifier		Not Made with Natural Rubber Latex
	Date/Country of Manufacture		Recyclable (Paper and Card)
	Expiry Date		Recyclable (Paper)
	Instructions for Use		Do Not Recycle (Film)
	Caution/Warning		

Product Code	Description	No. Per Box
40-310	SMALL	10
40-410	LARGE	10